



Centurion Scientific Ltd



# Pro-Vet

Veterinary Range



**Designed by  
Centrifuge Engineers  
and Veterinary  
practitioners...**

...together combining their experience to bring you the ultimate Veterinary Centrifuges.

The Pro-Vet HE offers small animal use from Capillary tubes (75mm) to 2ml.

The Pro-Vet Multi offers the same as the HE, but adding a swing out rotor to give increased sample capacity for larger animals, up to 100ml.

### Pro-Vet HE

With Bright blue LED display

<b>Speed</b>	<b>500-12000Rpm</b> in 4 steps
<b>Max Rcf</b>	<b>13500G</b>
<b>Timer</b>	<b>0-99mins</b> in 4 steps
<b>Dims HWD</b>	<b>23x23x35cms</b>
<b>Weight</b>	<b>12 Kilos</b> without rotor

### Pro-Vet Serum

With Bright blue LED display

<b>Speed</b>	<b>500-6000Rpm</b> in 4 steps
<b>Max Rcf</b>	<b>3500G</b>
<b>Timer</b>	<b>0-99mins</b> in 4 steps
<b>Dims HWD</b>	<b>23x23x35cms</b>
<b>Weight</b>	<b>12 Kilos</b> without rotor

### Pro-Vet Multi

With Bright blue LED display

<b>Speed</b>	<b>500-12000Rpm</b> in 10rpm steps
<b>Max Rcf</b>	<b>13500G</b>
<b>Timer</b>	<b>0-99mins</b> and constant. Pulse 0-90 secs.
<b>Dims HWD</b>	<b>27x33x46cms</b>
<b>Weight</b>	<b>16.5 Kilos</b> without rotor

#### Features to all models

- LED Display
- 10 acceleration rates
- 10 deceleration rates
- 10 programme memory
- Run in speed or Rcf (G force)

#### Pro-Vet Multi only

- Rotor recognition system

#### Standard features

- Stainless steel bowl
- Alloy & steel main frame with composite panels
- World brand leading industrial grade inverter
- High quality European brushless motor
- Full service access via coded system

#### Safety features to both

- Multi Point Lid locking system
- Imbalance vibration detector with auto reset
- Lid lock detector
- Overspeed sensor
- Set Inverter values
- Barrier Ring
- Motor overheat sensor

#### Advantages

- Cleanliness & rust free
- Strong, light & quiet
- Reliability & accuracy
- Quiet, cool & reliable
- Easy servicing

#### Advantages

- Best safety for lid
- Easy "eye" volume loading
- Unable to run with an open lid
- Safe detection of speed
- Electronic safety of speed
- Metal protection of chamber
- Motor & samples protection

## Pro-Vet HE

The dual purpose veterinary centrifuge that separates blood, urine, haematocrit and many other routine samples.

The standard, inclusive Combination rotor is simple simplicity not only allowing capillary tube analysis (PCV) but offering extra capacity of 2ml tubes, for larger animal analysis. Thus saving you time and money by not requiring further rotors and saving time in changing them.



## Pro-Vet Serum

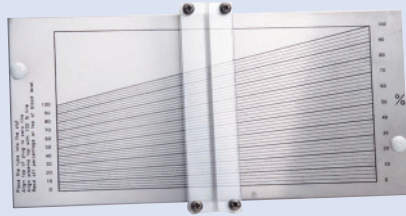
The dual purpose centrifuge that separates blood, urine, semen and other specimens.

Designed to accommodate larger samples. The standard 8 place rotor has 4 x 15ml and 4 x 7ml capability with reducers to 4ml. A truly flexible centrifuge for all your sample need.

Complete with the following



BRK5401 Combination rotor



8003 PCV Reader

Complete with the following



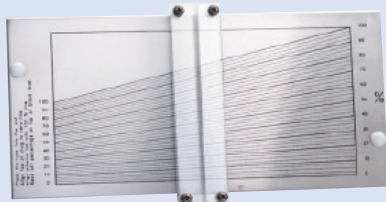
BR5408



Complete with the following



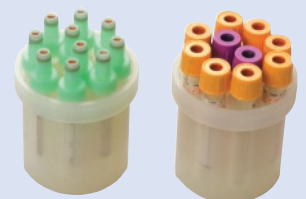
BRK5401 Combination rotor



8003 PCV Reader



BRK5505 Rotor



Adaptors (1set)

## Pro-Vet Multi

Equine, Zoological, Larger animals. This machine offers fantastic flexibility by using the combination rotor and a swing out rotor for those larger samples from up to 15ml of blood to 50-100ml of sperm.

All in complete safety as each rotor has a recognition system matched to the centrifuge. Just change the rotor that's all you have to do.

Having one machine that can do both large and small animals means huge space and cost savings.



# Centurion Cytology Centrifuge

Using centrifugal force to separate and deposit a monolayer of cells on slides while maintaining cellular integrity within a clearly defined area FROM ANY FLUID MATRIX. Cyto centrifugation also constructively flattens cells for excellent nuclear presentation. Our tilting action during spinning successfully centrifuges cells onto the deposition area of the slide giving all cell types equal opportunity for presentation.

Applications include cytology/histology, haematology/oncology, immunochemistry, virology/serology and microbiology.

## Pro-Vet CYTO 4

Complete with 4 place rotor and starter pack

<b>Speed</b>	<b>500-2000Rpm</b> in 10rpm steps
<b>Max Rcf</b>	<b>525G</b>
<b>Timer</b>	<b>0-99mins</b> and constant.
<b>Dims HWD</b>	<b>27x33x46cms</b>
<b>Weight</b>	<b>16.5 Kilos</b> without rotor

### Features

- LED Display
- 10 acceleration rates
- 10 deceleration rates
- 1 programme memory
- Run in speed or Rcf (G force)

### Standard features

- Stainless steel bowl
- Alloy & steel main frame with composite panels
- High quality European motors
- Full service access via coded system

### Safety features

- Multi-Point Lid locking system containment
- Imbalance vibration detector with auto reset
- Lid lock detector
- Overspeed sensor
- Set inverter values
- Barrier Ring
- Motor overheat sensor



### Advantages

- Cleanliness & rust free
- Strong, light & quiet
- Quiet, cool & reliable
- Easy servicing

### Advantages

- Best safety for lid
- Easy "eye" volume loading
- Unable to run with an open lid
- Safe detection of speed
- Electronic safety of speed
- Metal protection of chamber
- Motor & samples protection

# Cytology Accessories

PLEASE NOTE our cytology machine is supplied complete with a starter pack included in the price. Consisting of a rotor, clips, holders, filters and slides.

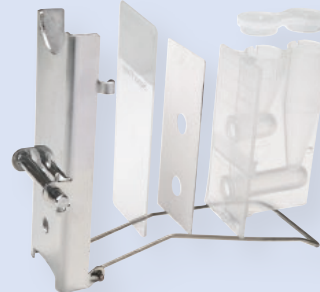


**4420** - 4 place rotor for CYTO4.  
High quality polypropylene & stainless steel – autoclavable



**4446** - DOUBLE sample disposable holder complete with white filter card (up to 1ml samples). Cell deposition area 6mm in diameter .

OUR DOUBLE sample holders double the number of sample presentations per run. Disposable holders come with filter cards pre attached although if you did decide to re use we can supply replacement filter cards.



**4462** - Our stainless steel clips hold the sample chambers (both single & double) , filter card and microscope slide (4043 Pk 100) for preparation in the cytology machines. Clips are autoclavable and reusable.

## Further products that can be used

Allowing complete flexibility in the market place our cytology centrifuge will accept consumables from Shandon and Kalktek including stainless steel clips



Showing Shandon Clip & holder



Showing 6ml holder

6ml disposable chamber intended for single use, eliminating the need for metal clips. Large rectangular cell deposition area 22 x14.75 mm. Provides 12 times the sample volume (6ml). Dedicated for convenient preparation of larger volume samples. **REQUIRES SEPARATE** filter cards

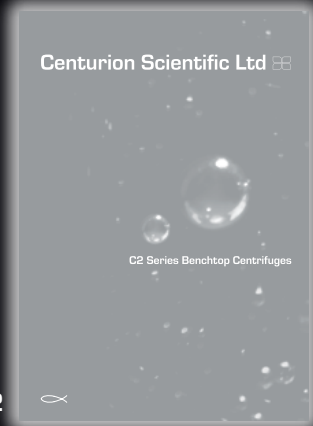
## Other ranges available

please ask for details

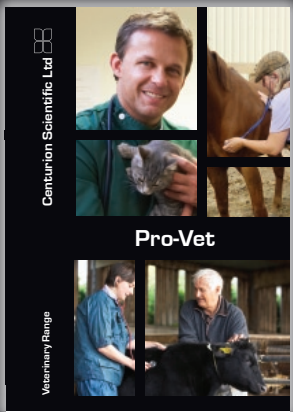
Pro-Sep



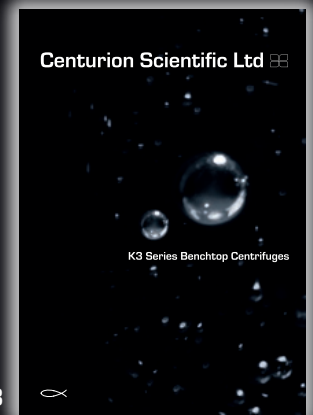
C2



Pro-Vet



K3



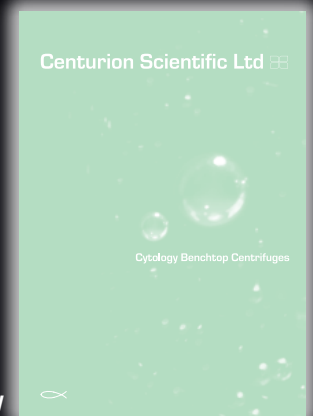
Distributed by

**Manufactured by:**

Centurion Scientific Ltd

email: [info@centurionscientific.co.uk](mailto:info@centurionscientific.co.uk)  
[www.pro-vet.co.uk](http://www.pro-vet.co.uk)

Cytology



Cell  
Washer

